

Sopwith Pup BALSAWOOD MINI AIRPLANE INSTRUCTION MANUAL



Specification

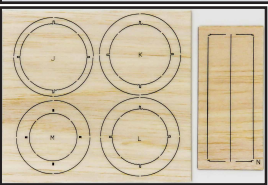
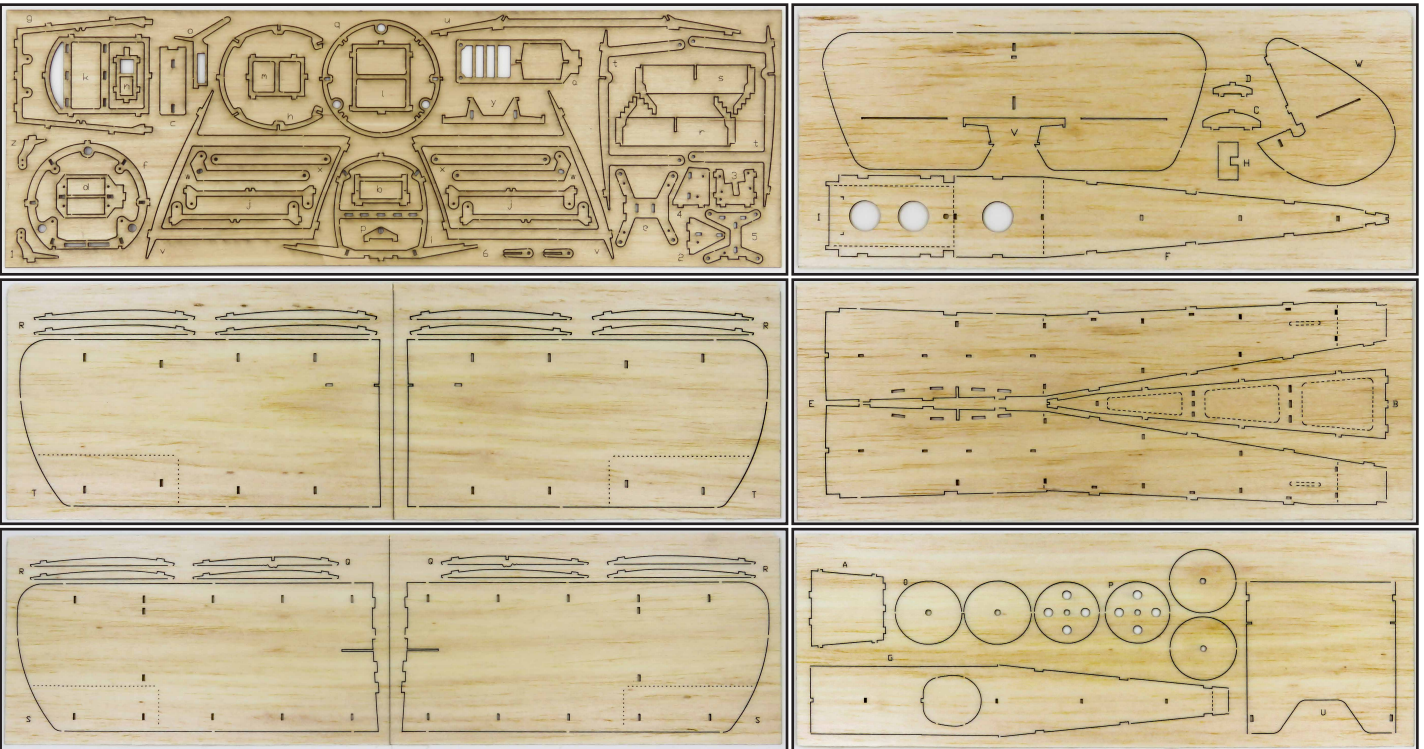
Wingspan : 378mm
 Length : 280mm
 Flying Weight : 42-50g

Brushed motor

Suggested Motor : XEPS7 brushed motor
 Suggested ESC/Servo/RX:DSM II 3in1 board
 Suggested Prop : 4530-5030
 Suggested BATT : 1S 150-200mAh

Brushless motor

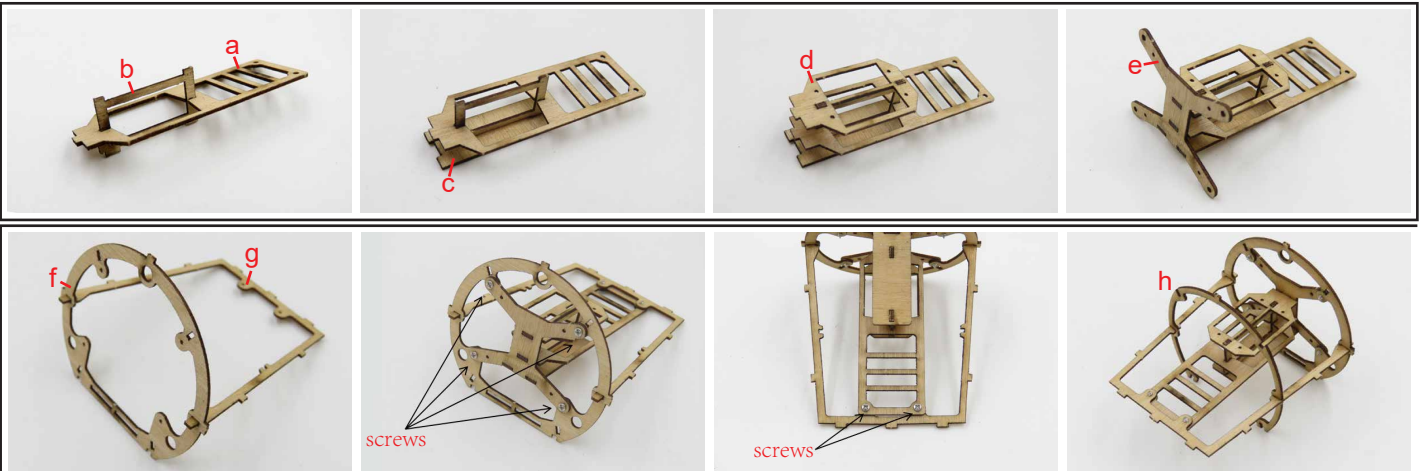
Suggested Motor: C05 (1104) 3700kv
 Suggested ESC: 1S 5A
 Suggested BATT : 1S 150-200mAh
 Suggested Prop: 5030
 Servo: 1.7g*2



Tools Needed



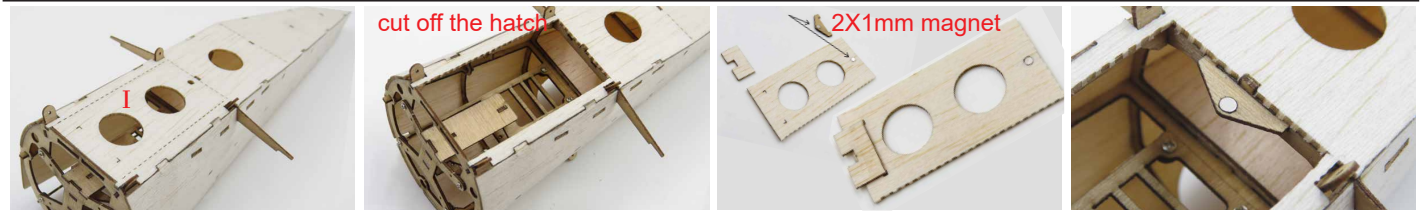
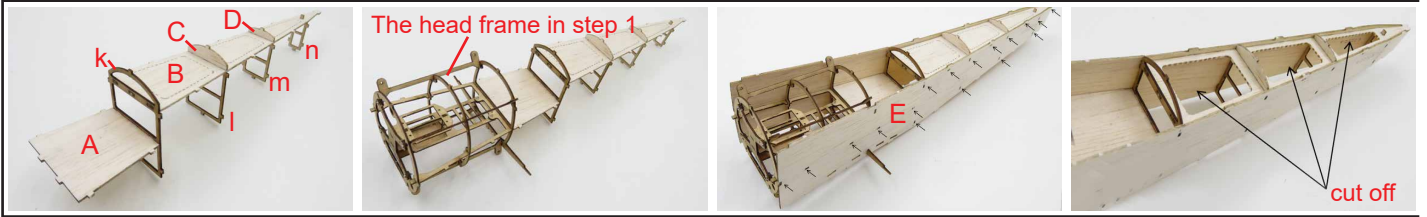
1. Install the mounting base for motor and power system.



Sopwith Pup BALSAWOOD MINI AIRPLANE INSTRUCTION MANUAL



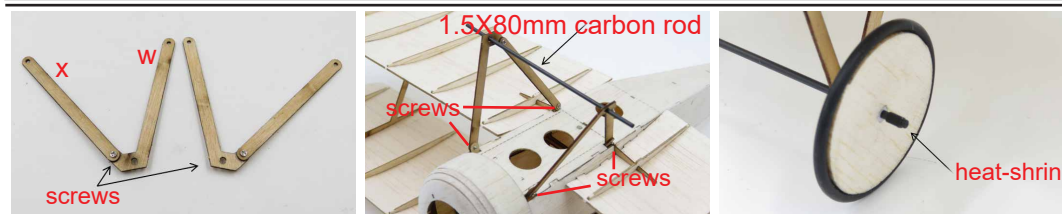
2. Assemble the fuselage.



3. Assemble the cowling

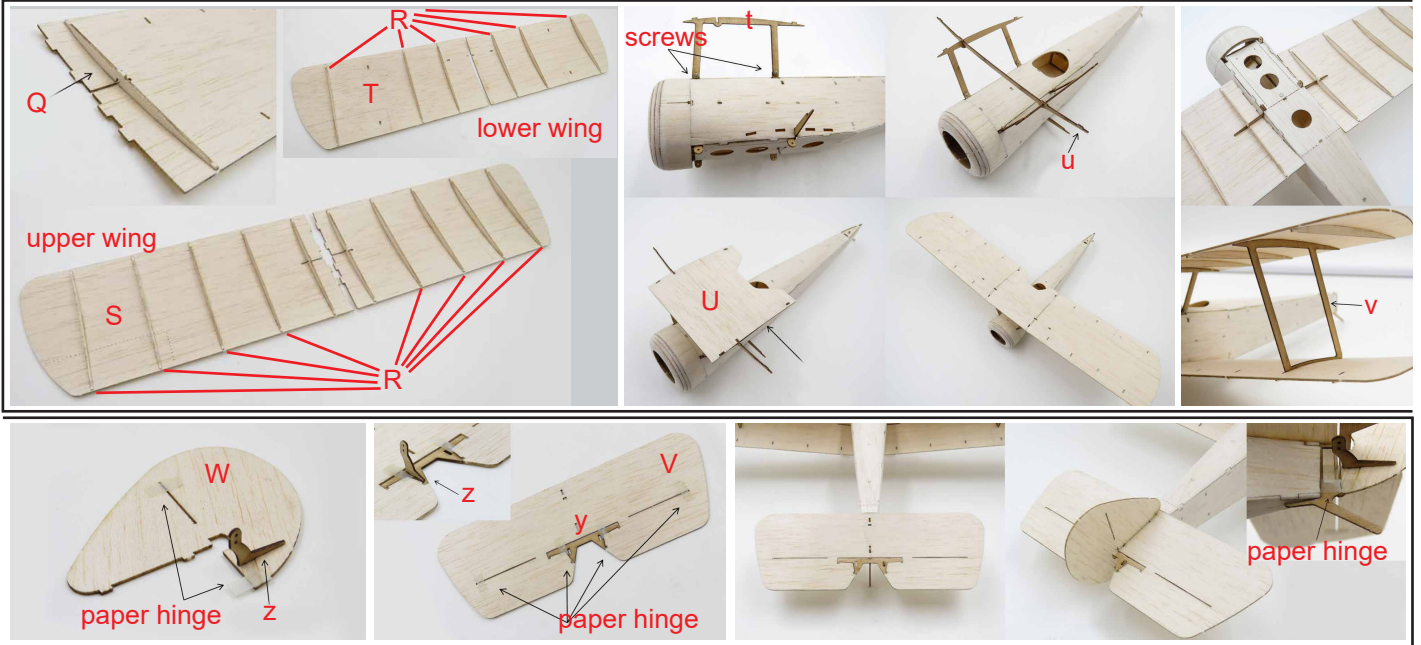


4. Assemble the upper and lower wing

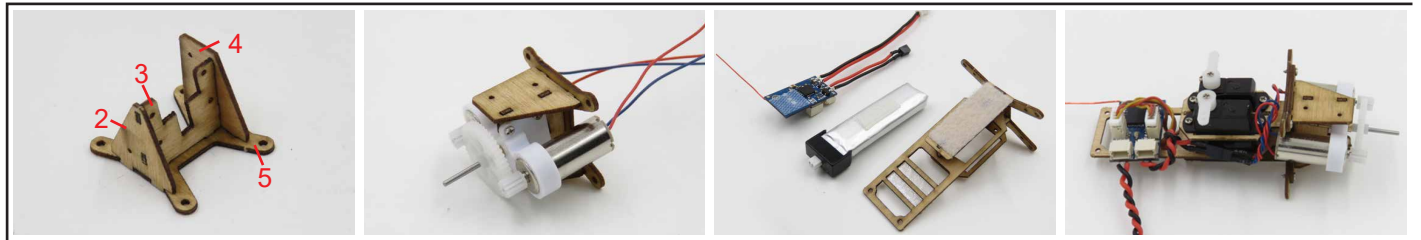


Sopwith Pup BALSAWOOD MINI AIRPLANE INSTRUCTION MANUAL

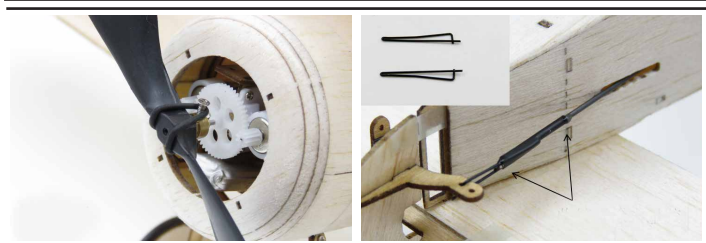
5. Assemble the upper and lower wing



6. Install the motor and power system (take the brushed motor as an example)



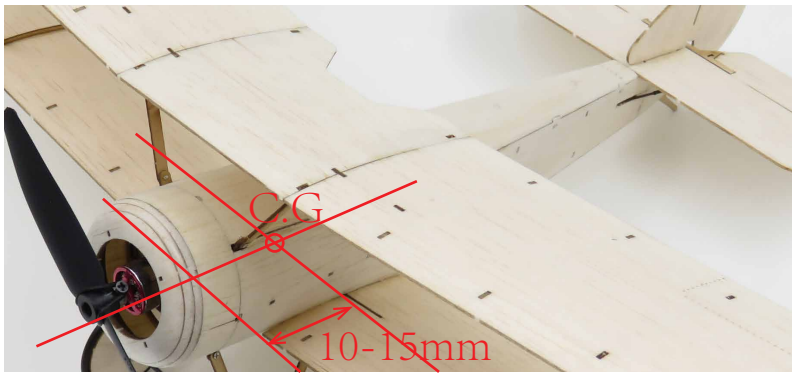
Take down the components a-e, and fix together with motor mount components 2-5 by screws, connect the servo pull-rod and electric plugs, finally assemble the components a-e onto the head.



8. Assemble the Brushless Motor.



Sopwith Pup BalsaWood Mini Airplane Instruction Manual



Adjust the C.G: 10-15mm from the leading edge of the lower wing.

